

GEMINI® PRODUCT RANGE
THE NEW STANDARD
FOR LAYING RAISED FLOORS



DAKOTA®

The new Gemini® product range

Gemini® is the new generation of adjustable pedestals, designed to combine superior adjustment precision with unprecedented installation effectiveness.



**ONLY TWO
MODELS**

height range
from 35 to 195 mm

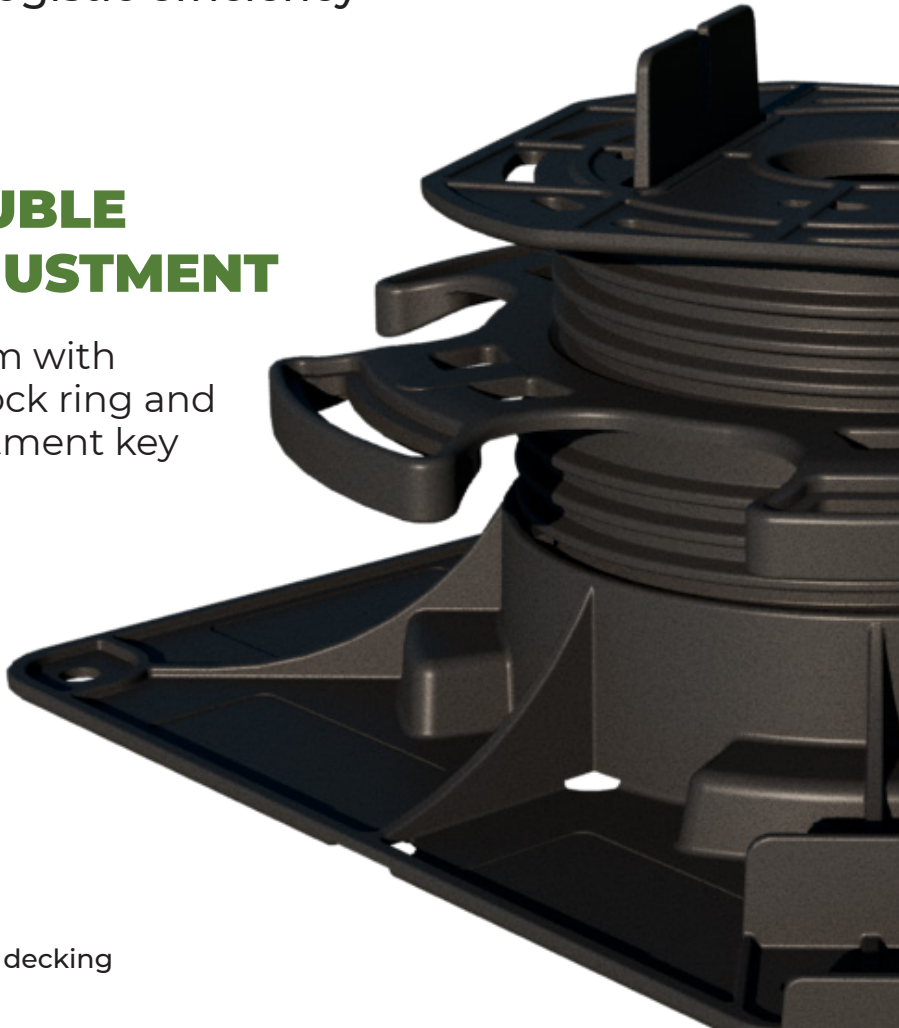
Gemini® paving

Why choose **Gemini®**

Gemini® is the ideal solution for who are seeking a perfect balance between superior adjustment accuracy, optimised easy installation, and logistic efficiency

DOUBLE ADJUSTMENT

System with
side lock ring and
adjustment key



Smart height adjustment for quick and accurate floor laying

Our smart height adjustment system combines an ergonomic side lock ring and a central screw for perfect floor laying in two complementary steps.



First tool-free adjustment

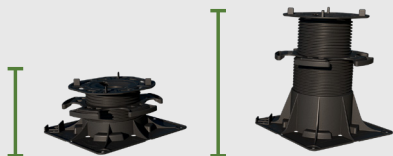
A side lock ring helps adjust the height quickly before the laying process begins to reduce laying times and mistakes.

Adjustments to millimetre accuracy

When the floor is finally laid, differences in level can be rectified using the adjustment key, without having to remove the slabs.

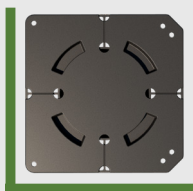


Boost the value of your raised floors



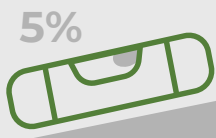
HEIGHTS FROM 35 TO 195 MM

Only 2 models cover a height range from 35 mm to 195 mm, with extensions up to 1 m.



OPTIMISED SQUARE BASE

Optimised installation flush to the walls and corners eliminates the need to cut the base. Equipped with a water drainage system.



SELF-LEVELLING SLOPE GRADIENTS UP TO 5%

The self-leveling head contributes to making up for screed slopes up to 5% to achieve perfectly planar surfaces.



VERSATILE APPLICATION

It is compatible with paving floors and decking structures.

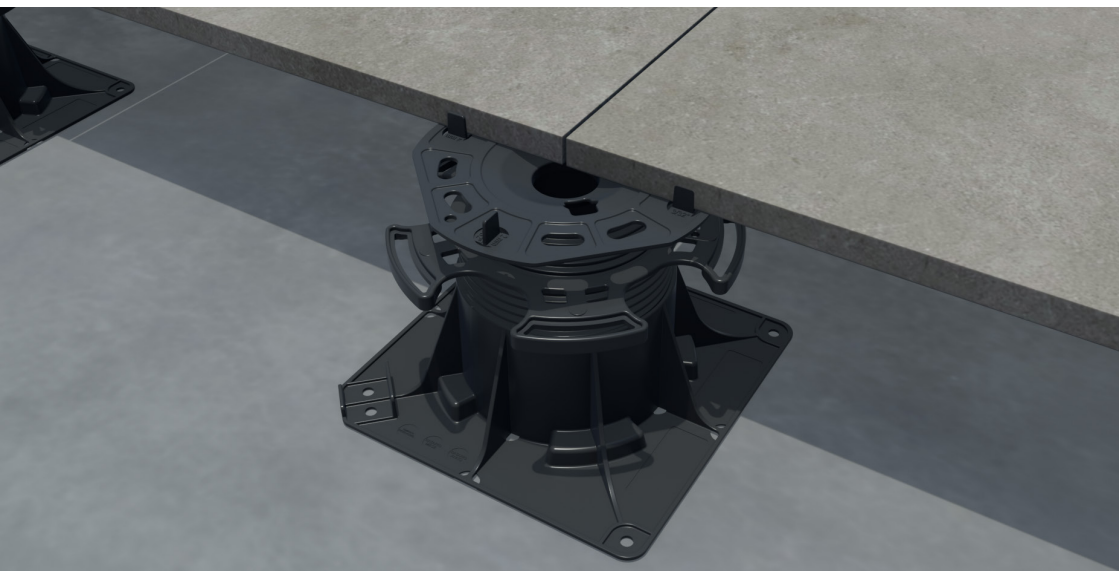


STRONG AND RELIABLE

It is built to offer stability and durability over time, following on the footsteps of the Arkimede® and Hercules® ranges.

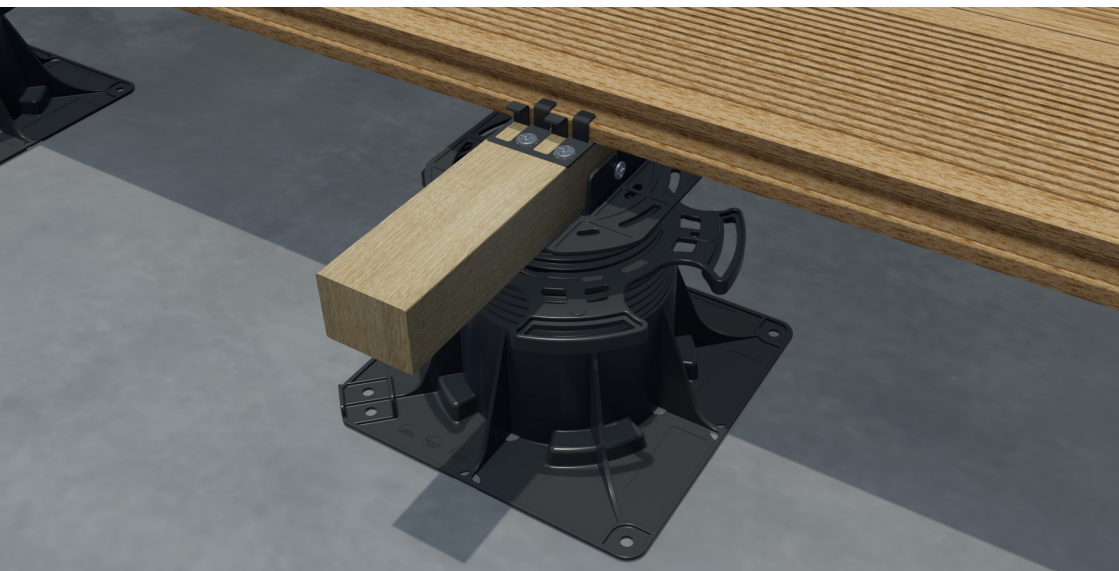
Gemini® Paving

Ref.	Product	Height (mm)	Pkg	Pallet	UM
TER09-2135/4A4M	Gemini Paving 35	35/75 mm - 4 mm	60 pc.	720 pc.	pc.
TER09-2135/4A2M	Gemini Paving 35	35/75 mm - 2 mm	60 pc.	720 pc.	pc.
TER09-2175/4A4M	Gemini Paving 75	75/195 mm - 4 mm	24 pc.	288 pc.	pc.
TER09-2175/4A2M	Gemini Paving 75	75/195 mm - 2 mm	24 pc.	288 pc.	pc.
TER09-2135/P40	Extension for Gemini 35 - h.40	40 mm	-	-	pc.
TER09-2135/P120	Extension for Gemini 75 - h.120	120 mm	-	-	pc.
TER09-2299/4GE	Bajonetta for Gemini - Keradeck 30 x 40	-	60 pc.	1620 pc.	pc.
TER09-2299S/4GE	Bajonetta for Gemini - Keradeck 20 x 60	-	60 pc.	1620 pc.	pc.
TER09-2100/AP	Self-leveling Head for Gemini Paving	-	24 pc.	8640 pc.	pc.
TER09-2100/AD	Self-leveling Head for Gemini Decking	-	24 pc.	5184 pc.	pc.



Gemini® Decking

Ref.	Product	Height (mm)	Pkg	Pallet	UM
TER09-2135/1A	Gemini Decking 35	35/75 mm	60 pc.	720 pc.	pc.
TER09-2175/1A	Gemini Decking 75	75/195 mm	24 pc.	288 pc.	pc.
TER09-2135/P40	Extension for Gemini 35 - h.40	40 mm	-	-	pc.
TER09-2135/P120	Extension for Gemini 75 - h.120	120 mm	-	-	pc.
TER09-2299/4GE	Bajonetta for Gemini - Keradeck 30 x 40	-	60 pc.	1620 pc.	pc.
TER09-2299S/4GE	Bajonetta for Gemini - Keradeck 20 x 60	-	60 pc.	1620 pc.	pc.



SEGUICI SU
f y i in

DAKOTA®
DAKOTA GROUP S.A.S.

www.dakota.eu
info@dakota.eu

REGISTERED OFFICE

Via Pitagora, 3
37010 Affi, Verona - Italy

CONTACTS

T. +39 045 6284080
F. +39 045 4771028
consulenzatecnica@dakotaitalia.com

HEADQUARTER

Via Don Cesare Scala, 55
37020 Brentino Belluno - Italy

